

Chen: Hi Louis. Where are you?

Louis: Hi. I'm in a train station. Its name is Holland Park. Where are you?

Chen: I'm in a shop. It's opposite High Street Kensington station.

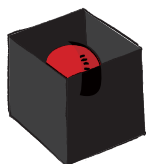
Louis: Where's High Street Kensington?

Chen: It's near Holland Park.

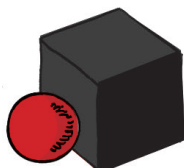
Louis: Oh yes! It's next to Notting Hill Gate. See you in five minutes.

Presentation

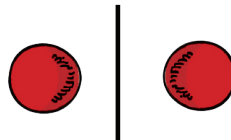
Prepositions of place



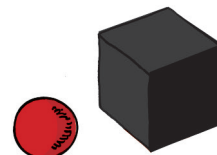
in
I'm in a shop.



next to
It's next to the train station.



opposite
The shop is opposite the train station.



near
The shop is near the park.

Key vocabulary

Everyday objects: bag, camera, keys, pens, wallet

Exercises

1 Number the parts of the telephone conversation from 1 to 6.



- ☒ 1 Hi Mateu. I'm at a bank. It's near Leicester Square station. Where are you?
- ☐ 2 Where is the shop?
- ☐ 3 Great! Leicester Square station is near Oxford Circus.
- ☐ 4 Hi Ben. I'm in a shop.
- ☐ 5 It's opposite Oxford Circus station.
- ☒ 6 Oh yes! See you in Leicester Square in five minutes.

2 Choose the correct option.

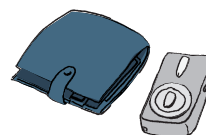


- 1 The chair is *in* / *next to* the table.
- 2 The books are *in* / *next to* the bag.
- 3 The phone is *next to* / *near* the camera.
- 4 The wallet is *near* / *in* the bag.
- 5 The keys are *next to* / *near* the wallet.
- 6 The pens are *next to* / *near* the phone and camera.

3 Write the correct preposition.



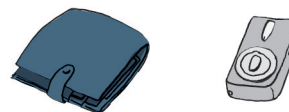
- 1 The keys are the bag.



- 3 The wallet is the camera.



- 2 This chair is that chair.



- 4 The wallet is the camera.

4 Put your phone, keys, pens and bag in the room. Describe the place.

My phone is

My keys are

My pens are

My bag is